
Appendix

Table 1 Standard Normal Probabilities

Table 2 Student's *t*-Distribution Percentage Points

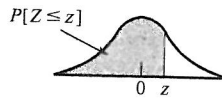
Table 3 χ^2 Distribution Percentage Points

Table 4 *F*-Distribution Percentage Points ($\alpha = .10$)

Table 5 *F*-Distribution Percentage Points ($\alpha = .05$)

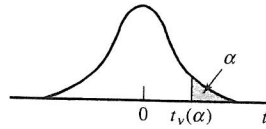
Table 6 *F*-Distribution Percentage Points ($\alpha = .01$)

TABLE 1 STANDARD NORMAL PROBABILITIES



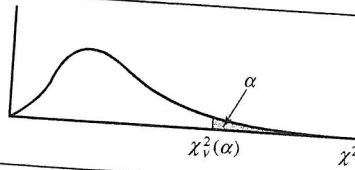
<i>z</i>	.00	.01	.02	.03	.04	.05	.06	.07	.08	.09
.0	.5000	.5040	.5080	.5120	.5160	.5199	.5239	.5279	.5319	.5359
.1	.5398	.5438	.5478	.5517	.5557	.5596	.5636	.5675	.5714	.5753
.2	.5793	.5832	.5871	.5910	.5948	.5987	.6026	.6064	.6103	.6141
.3	.6179	.6217	.6255	.6293	.6331	.6368	.6406	.6443	.6480	.6517
.4	.6554	.6591	.6628	.6664	.6700	.6736	.6772	.6808	.6844	.6879
.5	.6915	.6950	.6985	.7019	.7054	.7088	.7123	.7157	.7190	.7224
.6	.7257	.7291	.7324	.7357	.7389	.7422	.7454	.7486	.7517	.7549
.7	.7580	.7611	.7642	.7673	.7703	.7734	.7764	.7794	.7823	.7852
.8	.7881	.7910	.7939	.7967	.7995	.8023	.8051	.8078	.8106	.8133
.9	.8159	.8186	.8212	.8238	.8264	.8289	.8315	.8340	.8365	.8389
1.0	.8413	.8438	.8461	.8485	.8508	.8531	.8554	.8577	.8599	.8621
1.1	.8643	.8665	.8686	.8708	.8729	.8749	.8770	.8790	.8810	.8830
1.2	.8849	.8869	.8888	.8907	.8925	.8944	.8962	.8980	.8997	.9015
1.3	.9032	.9049	.9066	.9082	.9099	.9115	.9131	.9147	.9162	.9177
1.4	.9192	.9207	.9222	.9236	.9251	.9265	.9279	.9292	.9306	.9319
1.5	.9332	.9345	.9357	.9370	.9382	.9394	.9406	.9418	.9429	.9441
1.6	.9452	.9463	.9474	.9484	.9495	.9505	.9515	.9525	.9535	.9545
1.7	.9554	.9564	.9573	.9582	.9591	.9599	.9608	.9616	.9625	.9633
1.8	.9641	.9649	.9656	.9664	.9671	.9678	.9686	.9693	.9699	.9706
1.9	.9713	.9719	.9726	.9732	.9738	.9744	.9750	.9756	.9761	.9767
2.0	.9772	.9778	.9783	.9788	.9793	.9798	.9803	.9808	.9812	.9817
2.1	.9821	.9826	.9830	.9834	.9838	.9842	.9846	.9850	.9854	.9857
2.2	.9861	.9864	.9868	.9871	.9875	.9878	.9881	.9884	.9887	.9890
2.3	.9893	.9896	.9898	.9901	.9904	.9906	.9909	.9911	.9913	.9916
2.4	.9918	.9920	.9922	.9925	.9927	.9929	.9931	.9932	.9934	.9936
2.5	.9938	.9940	.9941	.9943	.9945	.9946	.9948	.9949	.9951	.9952
2.6	.9953	.9955	.9956	.9957	.9959	.9960	.9961	.9962	.9963	.9964
2.7	.9965	.9966	.9967	.9968	.9969	.9970	.9971	.9972	.9973	.9974
2.8	.9974	.9975	.9976	.9977	.9977	.9978	.9979	.9979	.9980	.9981
2.9	.9981	.9982	.9982	.9983	.9984	.9984	.9985	.9985	.9986	.9986
3.0	.9987	.9987	.9987	.9988	.9988	.9989	.9989	.9989	.9990	.9990
3.1	.9990	.9991	.9991	.9991	.9992	.9992	.9992	.9992	.9993	.9993
3.2	.9993	.9993	.9994	.9994	.9994	.9994	.9994	.9995	.9995	.9995
3.3	.9995	.9995	.9995	.9996	.9996	.9996	.9996	.9996	.9996	.9997
3.4	.9997	.9997	.9997	.9997	.9997	.9997	.9997	.9997	.9997	.9998
3.5	.9998	.9998	.9998	.9998	.9998	.9998	.9998	.9998	.9998	.9998

TABLE 2 STUDENT'S *t*-DISTRIBUTION PERCENTAGE POINTS



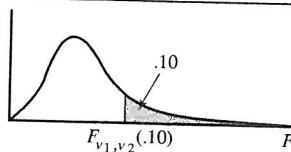
d.f. <i>ν</i>	α								
	.250	.100	.050	.025	.010	.00833	.00625	.005	.0025
1	1.000	3.078	6.314	12.706	31.821	38.190	50.923	63.657	127.321
2	.816	1.886	2.920	4.303	6.965	7.649	8.860	9.925	14.089
3	.765	1.638	2.353	3.182	4.541	4.857	5.392	5.841	7.453
4	.741	1.533	2.132	2.776	3.747	3.961	4.315	4.604	5.598
5	.727	1.476	2.015	2.571	3.365	3.534	3.810	4.032	4.773
6	.718	1.440	1.943	2.447	3.143	3.287	3.521	3.707	4.317
7	.711	1.415	1.895	2.365	2.998	3.128	3.335	3.499	4.029
8	.706	1.397	1.860	2.306	2.896	3.016	3.206	3.355	3.833
9	.703	1.383	1.833	2.262	2.821	2.933	3.111	3.250	3.690
10	.700	1.372	1.812	2.228	2.764	2.870	3.038	3.169	3.581
11	.697	1.363	1.796	2.201	2.718	2.820	2.981	3.106	3.497
12	.695	1.356	1.782	2.179	2.681	2.779	2.934	3.055	3.428
13	.694	1.350	1.771	2.160	2.650	2.746	2.896	3.012	3.372
14	.692	1.345	1.761	2.145	2.624	2.718	2.864	2.977	3.326
15	.691	1.341	1.753	2.131	2.602	2.694	2.837	2.947	3.286
16	.690	1.337	1.746	2.120	2.583	2.673	2.813	2.921	3.252
17	.689	1.333	1.740	2.110	2.567	2.655	2.793	2.921	3.252
18	.688	1.330	1.734	2.101	2.552	2.639	2.775	2.898	3.222
19	.688	1.328	1.729	2.093	2.539	2.625	2.759	2.878	3.197
20	.687	1.325	1.725	2.086	2.528	2.613	2.744	2.861	3.174
21	.686	1.323	1.721	2.080	2.518	2.601	2.732	2.845	3.153
22	.686	1.321	1.717	2.074	2.508	2.591	2.720	2.831	3.135
23	.685	1.319	1.714	2.069	2.500	2.582	2.710	2.819	3.119
24	.685	1.318	1.711	2.064	2.492	2.574	2.700	2.807	3.104
25	.684	1.316	1.708	2.060	2.485	2.566	2.692	2.797	3.091
26	.684	1.315	1.706	2.056	2.479	2.559	2.684	2.787	3.078
27	.684	1.314	1.703	2.052	2.473	2.552	2.676	2.779	3.067
28	.683	1.313	1.701	2.048	2.467	2.546	2.669	2.771	3.057
29	.683	1.311	1.699	2.045	2.462	2.541	2.663	2.763	3.047
30	.683	1.310	1.697	2.042	2.457	2.536	2.657	2.756	3.038
40	.681	1.303	1.684	2.021	2.423	2.499	2.616	2.750	3.030
60	.679	1.296	1.671	2.000	2.390	2.463	2.575	2.704	2.971
120	.677	1.289	1.658	1.980	2.358	2.428	2.536	2.660	2.915
∞	.674	1.282	1.645	1.960	2.326	2.394	2.498	2.617	2.860
								2.576	2.813

TABLE 3 χ^2 DISTRIBUTION PERCENTAGE POINTS



d.f. ν	α								
	.990	.950	.900	.500	.100	.050	.025	.010	.005
1	.0002	.004	.02	.45	2.71	3.84	5.02	6.63	7.88
2	.02	.10	.21	1.39	4.61	5.99	7.38	9.21	10.60
3	.11	.35	.58	2.37	6.25	7.81	9.35	11.34	12.84
4	.30	.71	1.06	3.36	7.78	9.49	11.14	13.28	14.86
5	.55	1.15	1.61	4.35	9.24	11.07	12.83	15.09	16.75
6	.87	1.64	2.20	5.35	10.64	12.59	14.45	16.81	18.55
7	1.24	2.17	2.83	6.35	12.02	14.07	16.01	18.48	20.28
8	1.65	2.73	3.49	7.34	13.36	15.51	17.53	20.09	21.95
9	2.09	3.33	4.17	8.34	14.68	16.92	19.02	21.67	23.59
10	2.56	3.94	4.87	9.34	15.99	18.31	20.48	23.21	25.19
11	3.05	4.57	5.58	10.34	17.28	19.68	21.92	24.72	26.76
12	3.57	5.23	6.30	11.34	18.55	21.03	23.34	26.22	28.30
13	4.11	5.89	7.04	12.34	19.81	22.36	24.74	27.69	29.82
14	4.66	6.57	7.79	13.34	21.06	23.68	26.12	29.14	31.32
15	5.23	7.26	8.55	14.34	22.31	25.00	27.49	30.58	32.80
16	5.81	7.96	9.31	15.34	23.54	26.30	28.85	32.00	34.27
17	6.41	8.67	10.09	16.34	24.77	27.59	30.19	33.41	35.72
18	7.01	9.39	10.86	17.34	25.99	28.87	31.53	34.81	37.16
19	7.63	10.12	11.65	18.34	27.20	30.14	32.85	36.19	38.58
20	8.26	10.85	12.44	19.34	28.41	31.41	34.17	37.57	40.00
21	8.90	11.59	13.24	20.34	29.62	32.67	35.48	38.93	41.40
22	9.54	12.34	14.04	21.34	30.81	33.92	36.78	40.29	42.80
23	10.20	13.09	14.85	22.34	32.01	35.17	38.08	41.64	44.18
24	10.86	13.85	15.66	23.34	33.20	36.42	39.36	42.98	45.56
25	11.52	14.61	16.47	24.34	34.38	37.65	40.65	44.31	46.93
26	12.20	15.38	17.29	25.34	35.56	38.89	41.92	45.64	48.29
27	12.88	16.15	18.11	26.34	36.74	40.11	43.19	46.96	49.64
28	13.56	16.93	18.94	27.34	37.92	41.34	44.46	48.28	50.99
29	14.26	17.71	19.77	28.34	39.09	42.56	45.72	49.59	52.34
30	14.95	18.49	20.60	29.34	40.26	43.77	46.98	50.89	53.67
40	22.16	26.51	29.05	39.34	51.81	55.76	59.34	63.69	66.77
50	29.71	34.76	37.69	49.33	63.17	67.50	71.42	76.15	79.49
60	37.48	43.19	46.46	59.33	74.40	79.08	83.30	88.38	91.95
70	45.44	51.74	55.33	69.33	85.53	90.53	95.02	100.43	104.21
80	53.54	60.39	64.28	79.33	96.58	101.88	106.63	112.33	116.32
90	61.75	69.13	73.29	89.33	107.57	113.15	118.14	124.12	128.30
100	70.06	77.93	82.36	99.33	118.50	124.34	129.56	135.81	140.17

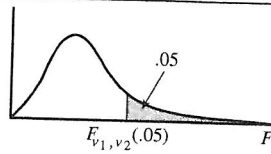
TABLE 4 F-DISTRIBUTION PERCENTAGE POINTS ($\alpha = .10$)



$\nu_1 \backslash \nu_2$	1	2	3	4	5	6	7	8	9	10	12	15	20	25	30	40	60
1	39.86	49.50	53.59	55.83	57.24	58.20	58.91	59.44	59.86	60.19	60.71	61.22	61.74	62.05	62.26	62.53	62.79
2	8.53	9.00	9.16	9.24	9.29	9.33	9.35	9.37	9.38	9.39	9.41	9.42	9.44	9.45	9.46	9.47	9.47
3	5.54	5.46	5.39	5.34	5.31	5.28	5.27	5.25	5.24	5.23	5.22	5.20	5.18	5.17	5.17	5.16	5.15
4	4.54	4.32	4.19	4.11	4.05	4.01	3.98	3.95	3.94	3.92	3.90	3.87	3.84	3.83	3.82	3.80	3.79
5	4.06	3.78	3.62	3.52	3.45	3.40	3.37	3.34	3.32	3.30	3.27	3.24	3.21	3.19	3.17	3.16	3.14
6	3.78	3.46	3.29	3.18	3.11	3.05	3.01	2.98	2.96	2.94	2.90	2.87	2.84	2.81	2.80	2.78	2.76
7	3.59	3.26	3.07	2.96	2.88	2.83	2.78	2.75	2.72	2.70	2.67	2.63	2.59	2.57	2.56	2.54	2.51
8	3.46	3.11	2.92	2.81	2.73	2.67	2.62	2.59	2.56	2.54	2.50	2.46	2.42	2.40	2.38	2.36	2.34
9	3.36	3.01	2.81	2.69	2.61	2.55	2.51	2.47	2.44	2.42	2.38	2.34	2.30	2.27	2.25	2.23	2.21
10	3.29	2.92	2.73	2.61	2.52	2.46	2.41	2.38	2.35	2.32	2.28	2.24	2.20	2.17	2.16	2.13	2.11
11	3.23	2.86	2.66	2.54	2.45	2.39	2.34	2.30	2.27	2.25	2.21	2.17	2.12	2.10	2.08	2.05	2.03
12	3.18	2.81	2.61	2.48	2.39	2.33	2.28	2.24	2.21	2.19	2.15	2.10	2.06	2.03	2.01	1.99	1.96
13	3.14	2.76	2.56	2.43	2.35	2.28	2.23	2.20	2.16	2.14	2.10	2.05	2.01	1.98	1.96	1.93	1.90
14	3.10	2.73	2.52	2.39	2.31	2.24	2.19	2.15	2.12	2.10	2.05	2.01	1.96	1.93	1.91	1.89	1.86
15	3.07	2.70	2.49	2.36	2.27	2.21	2.16	2.12	2.09	2.06	2.02	1.97	1.92	1.89	1.87	1.85	1.82
16	3.05	2.67	2.46	2.33	2.24	2.18	2.13	2.09	2.06	2.03	1.99	1.94	1.89	1.86	1.84	1.81	1.78
17	3.03	2.64	2.44	2.31	2.22	2.15	2.10	2.06	2.03	2.00	1.96	1.91	1.86	1.83	1.81	1.78	1.75
18	3.01	2.62	2.42	2.29	2.20	2.13	2.08	2.04	2.00	1.98	1.93	1.89	1.84	1.80	1.78	1.75	1.72
19	2.99	2.61	2.40	2.27	2.18	2.11	2.06	2.02	1.98	1.96	1.91	1.86	1.81	1.78	1.76	1.73	1.70
20	2.97	2.59	2.38	2.25	2.16	2.09	2.04	2.00	1.96	1.94	1.89	1.84	1.79	1.76	1.74	1.71	1.68
21	2.96	2.57	2.36	2.23	2.14	2.08	2.02	1.98	1.95	1.92	1.87	1.83	1.78	1.74	1.72	1.69	1.66
22	2.95	2.56	2.35	2.22	2.13	2.06	2.01	1.97	1.93	1.90	1.86	1.81	1.76	1.73	1.70	1.67	1.64
23	2.94	2.55	2.34	2.21	2.11	2.05	1.99	1.95	1.92	1.89	1.84	1.80	1.74	1.71	1.69	1.66	1.62
24	2.93	2.54	2.33	2.19	2.10	2.04	1.98	1.94	1.91	1.88	1.83	1.78	1.73	1.70	1.67	1.64	1.61
25	2.92	2.53	2.32	2.18	2.09	2.02	1.97	1.93	1.89	1.87	1.82	1.77	1.72	1.68	1.66	1.63	1.59
26	2.91	2.52	2.31	2.17	2.08	2.01	1.96	1.92	1.88	1.86	1.81	1.76	1.71	1.67	1.65	1.61	1.58
27	2.90	2.51	2.30	2.17	2.07	2.00	1.95	1.91	1.87	1.85	1.80	1.75	1.70	1.66	1.64	1.60	1.57
28	2.89	2.50	2.29	2.16	2.06	2.00	1.94	1.90	1.87	1.84	1.79	1.74	1.69	1.65	1.63	1.59	1.56
29	2.89	2.50	2.28	2.15	2.06	1.99	1.93	1.89	1.86	1.83	1.78	1.73	1.68	1.64	1.62	1.58	1.55
30	2.88	2.49	2.28	2.14	2.05	1.98	1.93	1.88	1.85	1.82	1.77	1.72	1.67	1.63	1.61	1.57	1.54
40	2.84	2.44	2.23	2.09	2.00	1.93	1.87	1.83	1.79	1.76	1.71	1.66	1.61	1.57	1.54	1.51	1.47
60	2.79	2.39	2.18	2.04	1.95	1.87	1.82	1.77	1.74	1.71	1.66	1.60	1.54	1.50	1.48	1.44	1.40
120	2.75	2.35	2.13	1.99	1.90	1.82	1.77	1.72	1.68	1.65	1.60	1.55	1.48	1.45	1.41	1.37	1.32
∞	2.71	2.30	2.08	1.94	1.85	1.77	1.72	1.67	1.63	1.60	1.55	1.49	1.42	1.38	1.34	1.30	1.24

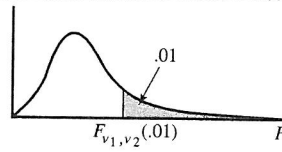
Appendix

TABLE 5 F-DISTRIBUTION PERCENTAGE POINTS ($\alpha = .05$)



$\nu_1 \backslash \nu_2$	1	2	3	4	5	6	7	8	9	10	12	15	20	25	30	40	60
1	161.5	199.5	215.7	224.6	230.2	234.0	236.8	238.9	240.5	241.9	243.9	246.0	248.0	249.3	250.1	251.1	252.2
2	18.51	19.00	19.16	19.25	19.30	19.33	19.35	19.37	19.38	19.40	19.41	19.43	19.45	19.46	19.46	19.47	19.48
3	10.13	9.55	9.28	9.12	9.01	8.94	8.89	8.85	8.81	8.79	8.74	8.70	8.66	8.63	8.62	8.59	8.57
4	7.71	6.94	6.59	6.39	6.26	6.16	6.09	6.04	6.00	5.96	5.91	5.86	5.80	5.77	5.75	5.72	5.69
5	6.61	5.79	5.41	5.19	5.05	4.95	4.88	4.82	4.77	4.74	4.68	4.62	4.56	4.52	4.50	4.46	4.43
6	5.99	5.14	4.76	4.53	4.39	4.28	4.21	4.15	4.10	4.06	4.00	3.94	3.87	3.83	3.81	3.77	3.74
7	5.59	4.74	4.35	4.12	3.97	3.87	3.79	3.73	3.68	3.64	3.57	3.51	3.44	3.40	3.38	3.34	3.30
8	5.32	4.46	4.07	3.84	3.69	3.58	3.50	3.44	3.39	3.35	3.28	3.22	3.15	3.11	3.08	3.04	3.01
9	5.12	4.26	3.86	3.63	3.48	3.37	3.29	3.23	3.18	3.14	3.07	3.01	2.94	2.89	2.86	2.83	2.79
10	4.96	4.10	3.71	3.48	3.33	3.22	3.14	3.07	3.02	2.98	2.91	2.85	2.77	2.73	2.70	2.66	2.62
11	4.84	3.98	3.59	3.36	3.20	3.09	3.01	2.95	2.90	2.85	2.79	2.72	2.65	2.60	2.57	2.53	2.49
12	4.75	3.89	3.49	3.26	3.11	3.00	2.91	2.85	2.80	2.75	2.69	2.62	2.54	2.50	2.47	2.43	2.38
13	4.67	3.81	3.41	3.18	3.03	2.92	2.83	2.77	2.71	2.67	2.60	2.53	2.46	2.41	2.38	2.34	2.30
14	4.60	3.74	3.34	3.11	2.96	2.85	2.76	2.70	2.65	2.60	2.53	2.46	2.39	2.34	2.31	2.27	2.22
15	4.54	3.68	3.29	3.06	2.90	2.79	2.71	2.64	2.59	2.54	2.48	2.40	2.33	2.28	2.25	2.20	2.16
16	4.49	3.63	3.24	3.01	2.85	2.74	2.66	2.59	2.54	2.49	2.42	2.35	2.28	2.23	2.19	2.15	2.11
17	4.45	3.59	3.20	2.96	2.81	2.70	2.61	2.55	2.49	2.45	2.38	2.31	2.23	2.18	2.15	2.10	2.06
18	4.41	3.55	3.16	2.93	2.77	2.66	2.58	2.51	2.46	2.41	2.34	2.27	2.19	2.14	2.11	2.06	2.02
19	4.38	3.52	3.13	2.90	2.74	2.63	2.54	2.48	2.42	2.38	2.31	2.23	2.16	2.11	2.07	2.03	1.98
20	4.35	3.49	3.10	2.87	2.71	2.60	2.51	2.45	2.39	2.35	2.28	2.20	2.12	2.07	2.04	1.99	1.95
21	4.32	3.47	3.07	2.84	2.68	2.57	2.49	2.42	2.37	2.32	2.25	2.18	2.10	2.05	2.01	1.96	1.92
22	4.30	3.44	3.05	2.82	2.66	2.55	2.46	2.40	2.34	2.30	2.23	2.15	2.07	2.02	1.98	1.94	1.89
23	4.28	3.42	3.03	2.80	2.64	2.53	2.44	2.37	2.32	2.27	2.20	2.13	2.05	2.00	1.96	1.91	1.86
24	4.26	3.40	3.01	2.78	2.62	2.51	2.42	2.36	2.30	2.25	2.18	2.11	2.03	1.97	1.94	1.89	1.84
25	4.24	3.39	2.99	2.76	2.60	2.49	2.40	2.34	2.28	2.24	2.16	2.09	2.01	1.96	1.92	1.87	1.82
26	4.23	3.37	2.98	2.74	2.59	2.47	2.39	2.32	2.27	2.22	2.15	2.07	1.99	1.94	1.90	1.85	1.80
27	4.21	3.35	2.96	2.73	2.57	2.46	2.37	2.31	2.25	2.20	2.13	2.06	1.97	1.92	1.88	1.84	1.79
28	4.20	3.34	2.95	2.71	2.56	2.45	2.36	2.29	2.24	2.19	2.12	2.04	1.96	1.91	1.87	1.82	1.77
29	4.18	3.33	2.93	2.70	2.55	2.43	2.35	2.28	2.22	2.18	2.10	2.03	1.94	1.89	1.85	1.81	1.75
30	4.17	3.32	2.92	2.69	2.53	2.42	2.33	2.27	2.21	2.16	2.09	2.01	1.93	1.88	1.84	1.79	1.74
40	4.08	3.23	2.84	2.61	2.45	2.34	2.25	2.18	2.12	2.08	2.00	1.92	1.84	1.78	1.74	1.69	1.64
60	4.00	3.15	2.76	2.53	2.37	2.25	2.17	2.10	2.04	1.99	1.92	1.84	1.75	1.69	1.65	1.59	1.53
120	3.92	3.07	2.68	2.45	2.29	2.18	2.09	2.02	1.96	1.91	1.83	1.75	1.66	1.60	1.55	1.50	1.43
∞	3.84	3.00	2.61	2.37	2.21	2.10	2.01	1.94	1.88	1.83	1.75	1.67	1.57	1.51	1.46	1.39	1.32

TABLE 6 F-DISTRIBUTION PERCENTAGE POINTS ($\alpha = .01$)



$\nu_1 \backslash \nu_2$	1	2	3	4	5	6	7	8	9	10	12	15	20	25	30	40	60
1	4052.	5000.	5403.	5625.	5764.	5859.	5928.	5981.	6023.	6056.	6106.	6157.	6209.	6240.	6261.	6287.	6313.
2	98.50	99.00	99.17	99.25	99.30	99.33	99.36	99.37	99.39	99.40	99.42	99.43	99.45	99.46	99.47	99.47	99.48
3	34.12	30.82	29.46	28.71	28.24	27.91	27.67	27.49	27.35	27.23	27.05	26.87	26.69	26.58	26.50	26.41	26.32
4	21.20	18.00	16.69	15.98	15.52	15.21	14.98	14.80	14.66	14.55	14.37	14.20	14.02	13.91	13.84	13.75	13.65
5	16.26	13.27	12.06	11.39	10.97	10.67	10.46	10.29	10.16	10.05	9.89	9.72	9.55	9.45	9.38	9.29	9.20
6	13.75	10.92	9.78	9.15	8.75	8.47	8.26	8.10	7.98	7.87	7.72	7.56	7.40	7.30	7.23	7.14	7.06
7	12.25	9.55	8.45	7.85	7.46	7.19	6.99	6.84	6.72	6.62	6.47	6.31	6.16	6.06	5.99	5.91	5.82
8	11.26	8.65	7.59	7.01	6.63	6.37	6.18	6.03	5.91	5.81	5.67	5.52	5.36	5.26	5.20	5.12	5.03
9	10.56	8.02	6.99	6.42	6.06	5.80	5.61	5.47	5.35	5.26	5.11	4.96	4.81	4.71	4.65	4.57	4.48
10	10.04	7.56	6.55	5.99	5.64	5.39	5.20	5.06	4.94	4.85	4.71	4.56	4.41	4.31	4.25	4.17	4.08
11	9.65	7.21	6.22	5.67	5.32	5.07	4.89	4.74	4.63	4.54	4.40	4.25	4.10	4.01	3.94	3.86	3.78
12	9.33	6.93	5.95	5.41	5.06	4.82	4.64	4.50	4.39	4.30	4.16	4.01	3.86	3.76	3.70	3.62	3.54
13	9.07	6.70	5.74	5.21	4.86	4.62	4.44	4.30	4.19	4.10	3.96	3.82	3.66	3.57	3.51	3.43	3.34
14	8.86	6.51	5.56	5.04	4.69	4.46	4.28	4.14	4.03	3.94	3.80	3.66	3.51	3.41	3.35	3.27	3.18
15	8.68	6.36	5.42	4.89	4.56	4.32	4.14	4.00	3.89	3.80	3.67	3.52	3.37	3.28	3.21	3.13	3.05
16	8.53	6.23	5.29	4.77	4.44	4.20	4.03	3.89	3.78	3.69	3.55	3.41	3.26	3.16	3.10	3.02	2.93
17	8.40	6.11	5.19	4.67	4.34	4.10	3.93	3.79	3.68	3.59	3.46	3.31	3.16	3.07	3.00	2.92	2.83
18	8.29	6.01	5.09	4.58	4.25	4.01	3.84	3.71	3.60	3.51	3.37	3.23	3.08	2.98	2.92	2.84	2.75
19	8.18	5.93	5.01	4.50	4.17	3.94	3.77	3.63	3.52	3.43	3.30	3.15	3.00	2.91	2.84	2.76	2.67
20	8.10	5.85	4.94	4.43	4.10	3.87	3.70	3.56	3.46	3.37	3.23	3.09	2.94	2.84	2.78	2.69	2.61
21	8.02	5.78	4.87	4.37	4.04	3.81	3.64	3.51	3.40	3.31	3.17	3.03	2.88	2.79	2.72	2.64	2.55
22	7.95	5.72	4.82	4.31	3.99	3.76	3.59	3.45	3.35	3.26	3.12	2.98	2.83	2.73	2.67	2.58	2.50
23	7.88	5.66	4.76	4.26	3.94	3.71	3.54	3.41	3.30	3.21	3.07	2.93	2.78	2.69	2.62	2.54	2.45
24	7.82	5.61	4.72	4.22	3.90	3.67	3.50	3.36	3.26	3.17	3.03	2.89	2.74	2.64	2.58	2.49	2.40
25	7.77	5.57	4.68	4.18	3.85	3.63	3.46	3.32	3.22	3.13	2.99	2.85	2.70	2.60	2.54	2.45	2.36
26	7.72	5.53	4.64	4.14	3.82	3.59	3.42	3.29	3.18	3.09	2.96	2.81	2.66	2.57	2.50	2.42	2.33
27	7.68	5.49	4.60	4.11	3.78	3.56	3.39	3.26	3.15	3.06	2.93	2.78	2.63	2.54	2.47	2.38	2.29
28	7.64	5.45	4.57	4.07	3.75	3.53	3.36	3.23	3.12	3.03	2.90	2.75	2.60	2.51	2.44	2.35	2.26
29	7.60	5.42	4.54	4.04	3.73	3.50	3.33	3.20	3.09	3.00	2.87	2.73	2.57	2.48	2.41	2.33	2.23
30	7.56	5.39	4.51	4.02	3.70	3.47	3.30	3.17	3.07	2.98	2.84	2.70	2.55	2.45	2.39	2.30	2.21
40	7.31	5.18	4.31	3.83	3.51	3.29	3.12	2.99	2.89	2.80	2.66	2.52	2.37	2.27	2.20	2.11	2.02
60	7.08	4.98	4.13	3.65	3.34	3.12	2.95	2.82	2.72	2.63	2.50	2.35	2.20	2.10	2.03	1.94	1.84
120	6.85	4.79	3.95	3.48	3.17	2.96	2.79	2.66	2.56	2.47	2.34	2.19	2.03	1.93	1.86	1.76	1.66
∞	6.63	4.61	3.78	3.32	3.02	2.80	2.64	2.51	2.41	2.32	2.18	2.04	1.88	1.78	1.70	1.59	1.47